

# Sellex



## Education



Use your mouse to navigate





Blau Museum, Spain



UPC University, Perú



Elias Querejeta Film School, Spain



Mont de Marsan Library, France



Segovia Public Library, Spain



La Fe Hospital Library, Spain



Oblate's Library, Italy



Senzoku Gakuen School, Japan

## Blau Museum

City: Barcelona

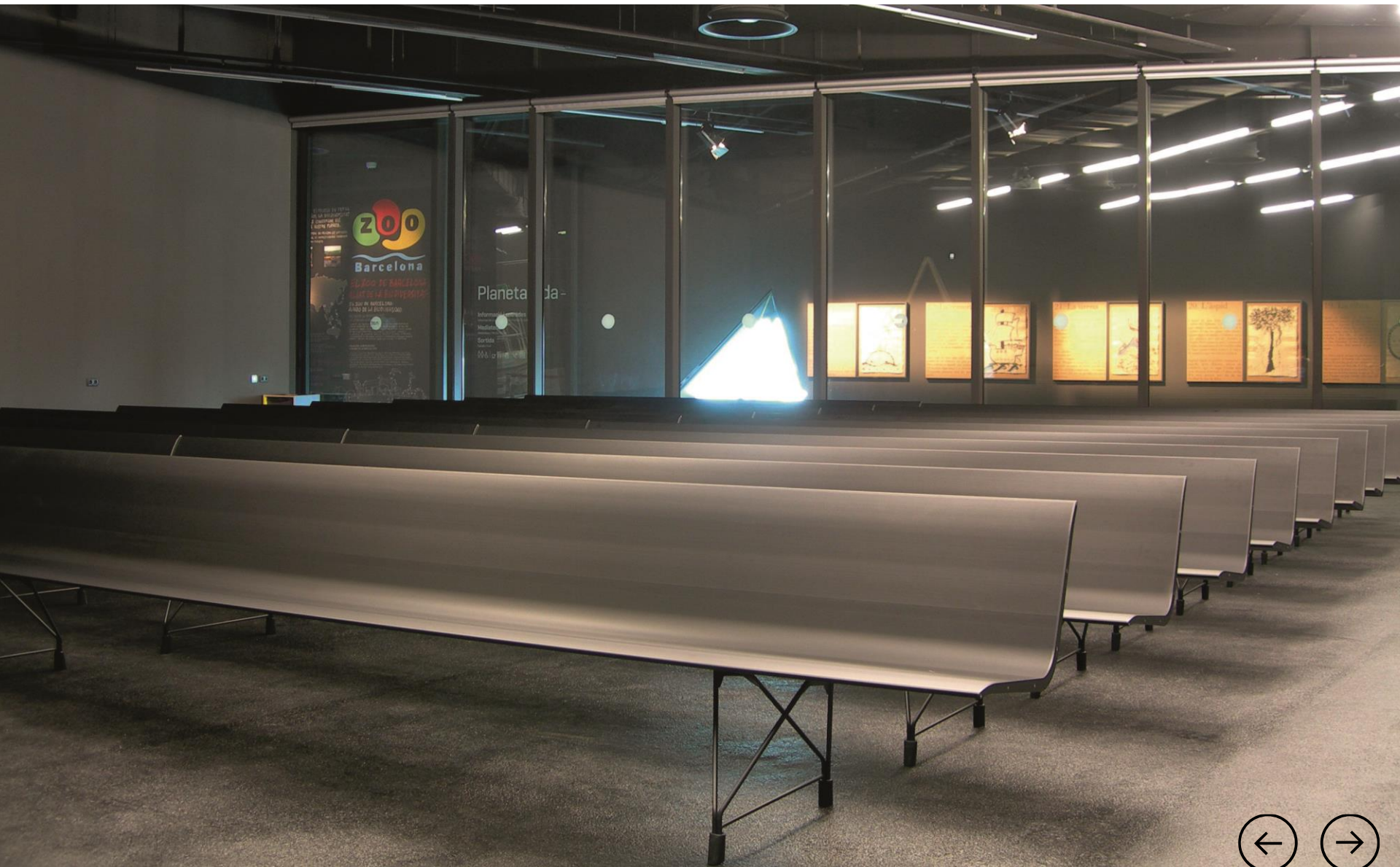
Country: Spain

Date: 2012

Architects:  
Herzog & De Meuron











## UPC University

City: Lima

Country: Perú

Date: 2017

Architects:  
Contract Workplaces













## Elias Querejeta Film School

City: Donostia – San Sebastián

Country: Spain

Date: 2015

Architects:

Juan Manuel Montero Madariaga and  
Naiara Montero Viar (remodeling)









## Mont de Marsan Library

City: Mont de Marsan

Country: France

Date: 2012

Architects:  
Archi5









## Segovia Public Library

City: Segovia

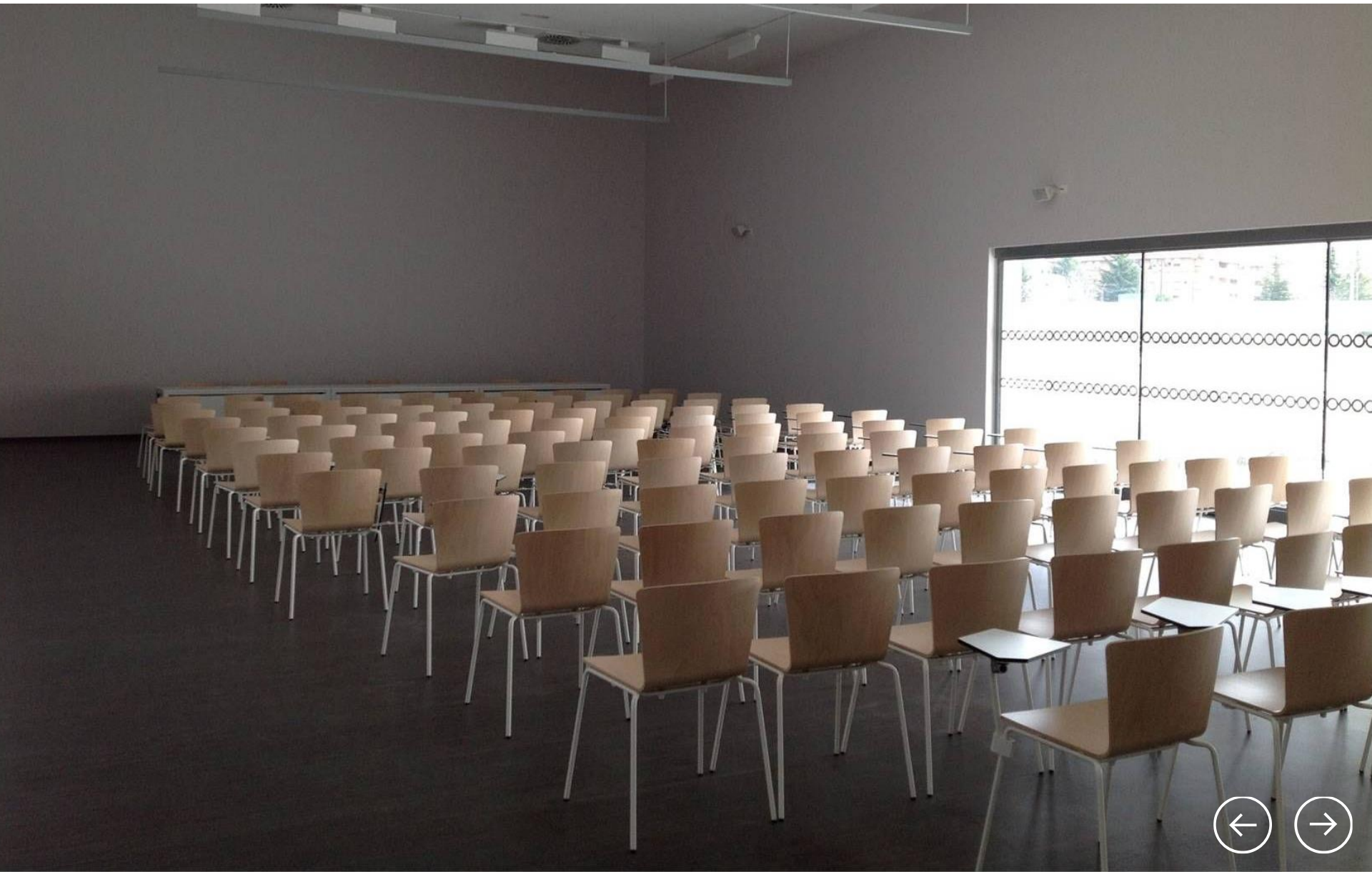
Country: Spain

Date: 2016

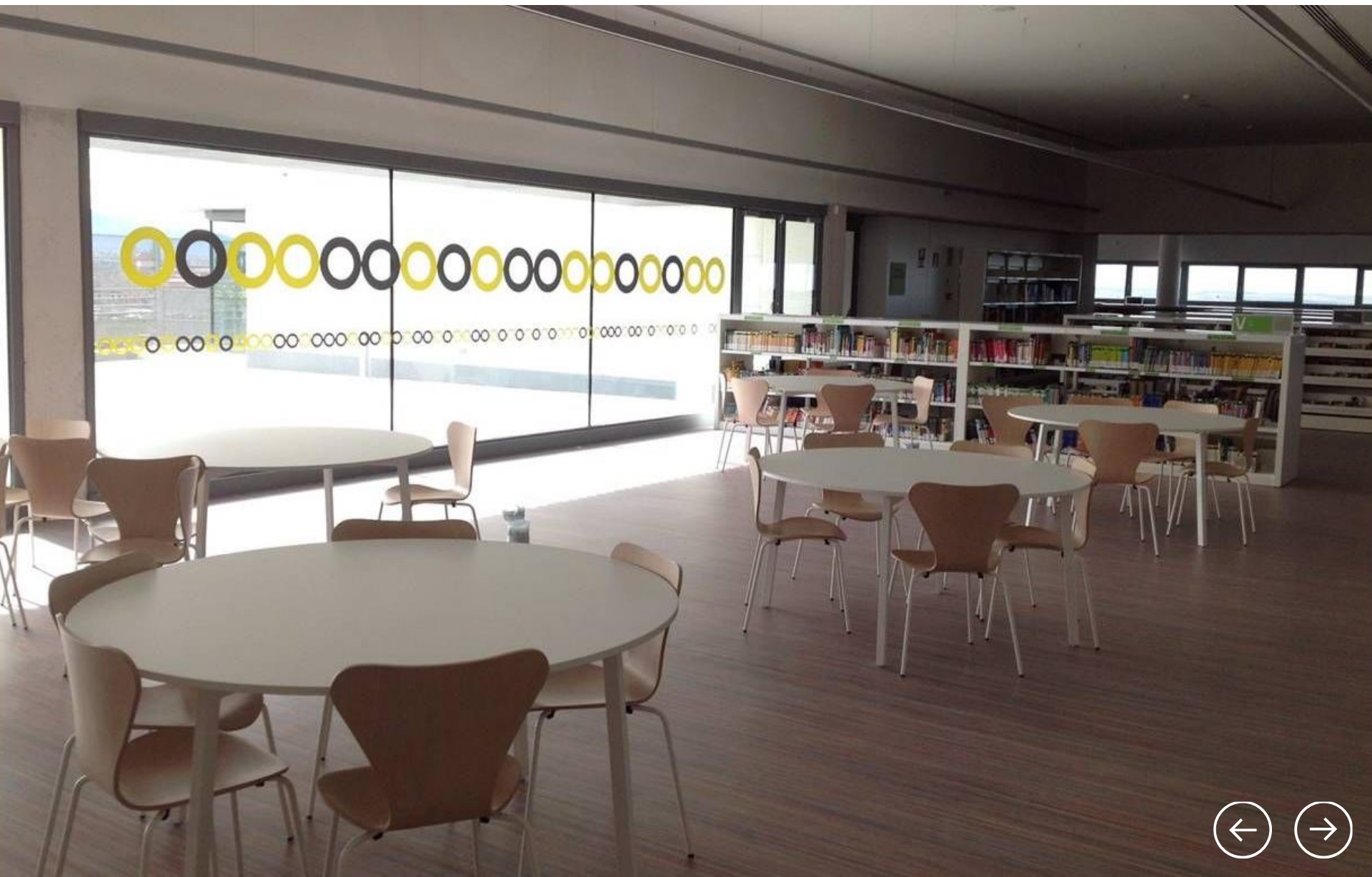
Architects:  
Cano y Escario











## La Fe Hospital Library

City: Valencia

Country: Spain

Date: 2011

Architects:

Ramon Esteve, Alfonso Casares  
(Aidhos Arquitects)











## Oblate's Library

City: Florence

Country: Italy

Date: 2013

Architect:  
Marco Baldini (remodeling)















## Senzoku Gakuen School

City: Kanagawa

Country: Japan

Date: 2013

Architect:  
Kunihide Oshinomi

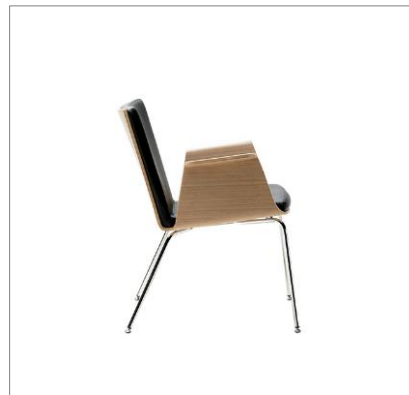








SLAM Chair



DON Chair



HAMMOK Chair



BACK Modular Seating



AERO Bench



FAST Table



LORCA Table



JAKIN System

# SLAM Chair

Thanks to its wide range of possibilities, SLAM Chairs program allows to equip the different spaces of the same building keeping a unique aesthetic.

## Awards:

- 'Prize of Excellence', SIDIM Design Show, Montreal 2013
- Metropolis Magazine: "Metropolis Like " , Chicago 2013



Design  
Lievore Altherr Molina





# DON Chair

The principle of DON's design is a single block shell shaping at the same time the seat, back and armrests, able to be mounted on different bases, so featuring different pieces, all of them with their own identity but with the common element of the same shell, properly upholstered to offer a perfect comfort.



Design  
G. Bernal







# HAMMOK Chair

HAMMOK is a very peculiar chair based on a successful combination of a wooden shell, simple shaped but extremely comfortable, and a steel rod conveniently bent, so that shell and rod become a single structure. A version with armrest and a lounge chair complete the HAMMOK family.

## Awards:

- Gold Award Toronto 2007



Design  
Burkhard Vogtherr





# BACK Modular Seating

Back Modular Seating System develops a new concept of modular seating. Different combinations are possible by using wooden finishes and paddings, linear compositions with other in zigzagging or fully upholstered units with view wooden strips ones.

## Awards:

- Silver Award Neocon, Chicago 2018



Design  
Burkhard Vogtherr





# AERO Bench

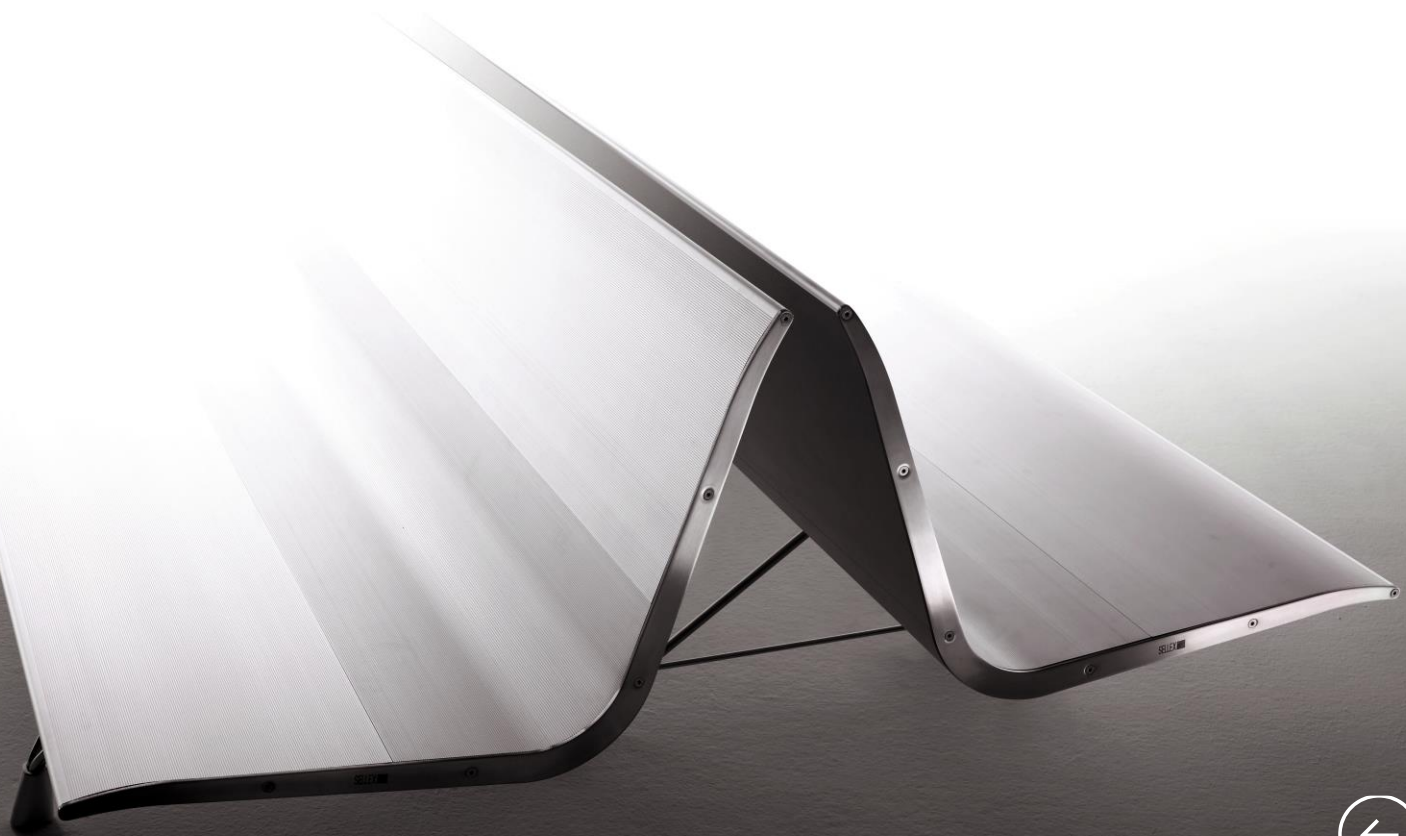
AERO is the happy outcome of a combination of minimalism, lightness, elegance, comfort and sturdiness. All this based on grooved aluminium profiles recalling an aircraft' swing. The materials used in its construction, aluminium and stainless steel, make AERO suitable both for indoors and outdoors purposes.

## Awards:

- SIDI Selection XXI century First Prize, in the Contract category
- AEPD First Prize 2004
- IF Gold Award, Hannover 2004
- Gold Award Neocon, Chicago 2003
- Best of Neocon's Competition, Chicago 2003
- Delta de Oro ADI-FAD 2003
- Excellence of Product en Spectrum, Londres 2002



Design  
Lievore Altherr Molina





# FAST Table

The FAST Table, better to call it FAST System, is knock-down, stackable and gives way to a variety of compositions according to the required purpose, with different tops by using a unique frame. Besides, it allows to link the tops in order to get spaces devoted to seminars, meetings, and so on.

## Awards:

- Best of NeoCon-Innovaton Award, Chicago 2012
- ADCV 2009 Gold award
- ADI-FAD 2009 Selection



Design  
Carlos Tiscar



# LORCA Table

The essence of LORCA Table is the solid wood structure crowned by a wooden top. Its unique design and functionality make of LORCA a singular element at offices, workplaces and reading rooms.

Awards:

- ADI-FAD 2011 Selection



Design  
Abad Diseño





# JAKIN System

Specially designed for the equipment of Libraries, able to meet with a wide range of needs, from the small office to the the big Public Library. It is base on a modular system allowing solutions "to measure" for any different necessity of furnishing.



Design  
Abad Diseño





You are welcome to  
**contact us** in order to get  
further information about us  
and our products.

Polígono Arretxe-Ugalde  
Ezurriki Kalea, 8-10  
20305 Irún (Gipuzkoa), Spain

[View map](#)

T (+34) 943 557011

F (+34) 943 557050

[sellex@sellex.es](mailto:sellex@sellex.es)

[www.sellex.es](http://www.sellex.es)



# Sellex

