

Sellex

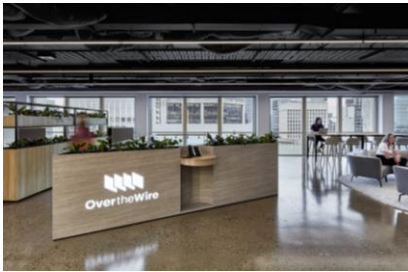


Workspace



Use your mouse to navigate

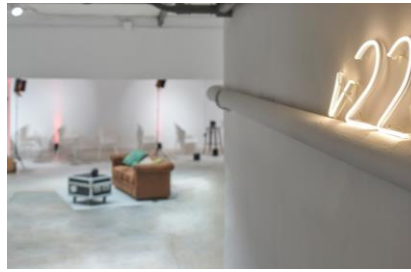




Over the Wire, Australia



KAS BANK, The Netherlands



V22 Space, Spain



DRV Accountants & Advis., The Netherlands



Air Tahiti Nui, French Polynesia



Flexpoint, Belgium



RMB, Belgium



Salvà Ortín Architects Studio, Spain

Over the Wire

City: Brisbane

Country: Australia

Date: 2020

Architects:
Archway Commercial Interiors









KAS BANK

City: Amsterdam

Country: The Netherlands

Date: 2018

Architects:
Julia







V22 Space

City: Madrid

Country: Spain

Date: 2020

Architects:
V22 Space Team







DRV Accountants & Adviseurs

City: Bergen op Zoom

Country: The Netherlands

Date: 2019

Architects:
Lanowv & So BV







Air Tahiti Nui

City: Tahiti

Country: French Polynesia

Date: 2018

Architects:
Beaudet + Regaud





Flexpoint

City: Hasselt

Country: Belgium

Date: 2013

Architects:
MAMU Architects





RMB

City: Brussels

Country: Belgium

Date: 2016

Architects:
Colliers International





Salvà Ortín Architects Studio

City: Barcelona

Country: Spain

Date: 2018

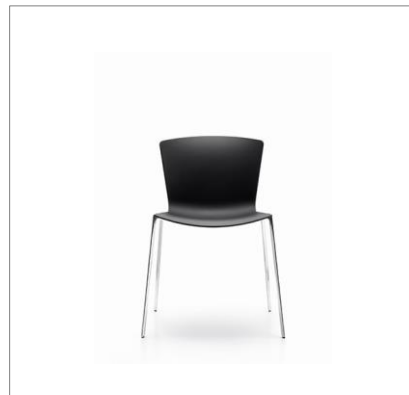
Architects:
Salvà Ortín Architects







HANDY Stool



SLAM Chair



SET Stool



SWING Chair



FAST Table



LORCA Table



ZUBI Table



T-99 System

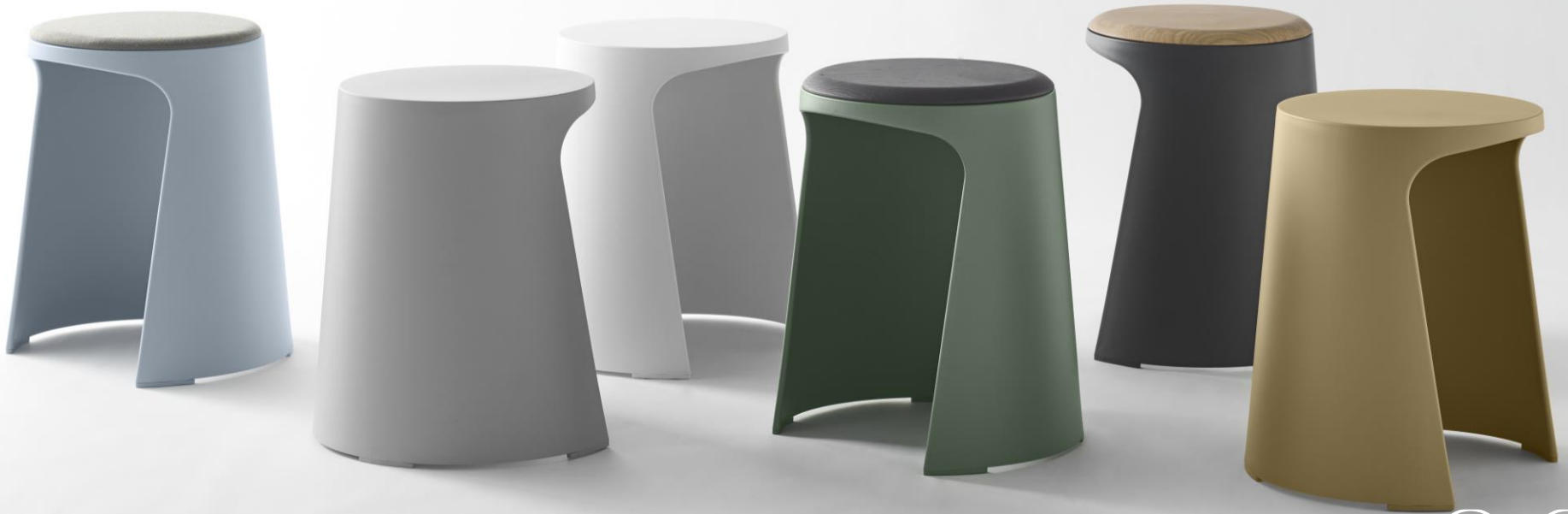
HANDY Stool

HANDY Stool is an auxiliary furniture element that can be used in different spaces and has various applications. It is a very versatile stool that fits perfectly in offices, rest areas, hotels and shops among others. It is ideal for multipurpose facilities because, as being a stackable stool, it takes up little space. In addition to this, HANDY stacking stool have different.

The 100/100 version is sustainable and eco-friendly because is made of 100% recycled and 100% recyclable materials.



Design
Stephen Philips (ARUP)



SLAM Chair

Thanks to its wide range of possibilities, SLAM Chairs program allows to equip the different spaces of the same building keeping a unique aesthetic.

The 100/100 version is sustainable and eco-friendly because is made of 100% recycled and 100% recyclable materials.

Awards:

- 'Prize of Excellence', SIDIM Design Show, Montreal 2013
- Metropolis Magazine: "Metropolis Like " , Chicago 2013



Design
Lievore Altherr Molina





SET Stool

SET Barstool program is aimed to cover any kind of barstools needs (high or low) at whatever facility, thanks to its wide frames options: Steel rod frame, Central leg, Wooden legs, Floor fixing. It is able to be combined with different shells (all of them either upholstered or not): Wooden shell with back, Wooden shell backless, Polypropylene shell (in different colours).

The 100/100 version is sustainable and eco-friendly because is made of 100% recycled and 100% recyclable materials.



Design
Mario Ruiz



SWING Chair

SWING chairs program, available in different versions, meets with the needs for Meeting, Conference and Board Directors Meeting Rooms.



Design
Vogtherr & Dörner



FAST Table

The FAST Table, better to call it FAST System, is knock-down, stackable and gives way to a variety of compositions according to the required purpose, with different tops by using a unique frame. Besides, it allows to link the tops in order to get spaces devoted to seminars, meetings, and so on.

Awards:

- Best of NeoCon-Innovaton Award, Chicago 2012
- ADCV 2009 Gold award
- ADI-FAD 2009 Selection



Design
Carlos Tiscar



LORCA Table

The essence of LORCA Table is the solid wood structure crowned by a wooden top. Its unique design and functionality make of LORCA a singular element at offices, workplaces and reading rooms.

Awards:

- ADI-FAD 2011 Selection



Design
Abad Diseño



ZUBI Table

Facing new times means to have to adapt to new ways of leisure and work, so new solutions are to be found. In order to solve these needs in working spaces, hotel zones or waiting areas in passenger terminals, we have developed the new ZUBI Tables system.



Design
Abad Diseño



T-99 Shelving system

T-99 offers high-resistance storage options while maintaining its minimalist aesthetics where the object and not the system is the centre of attention.



Design
Estudi Blanc



You are welcome to
contact us in order to get
further information about us
and our products.

Polígono Arretxe-Ugalde
Ezurriki Kalea, 8-10
20305 Irún (Gipuzkoa), Spain

[View map](#)

T (+34) 943 557011

F (+34) 943 557050

sellex@sellex.es

www.sellex.es



Sellex

