

TECHNICAL DATA

Product : LORCA Meeting Table

Design : Abad

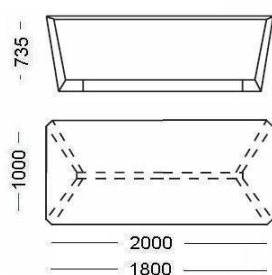


Technical data :

Top: chipboard veneered or lacquered 31mm thick, 10mm bevelled edges

Legs: solid wood veneered or lacquered 70x40mm.

Frame: metal steel tube, epoxy painted.



Meeting table with single Top

180x100 cm

200x100 cm



Meeting table with double Top

210x130 cm

280x130 cm

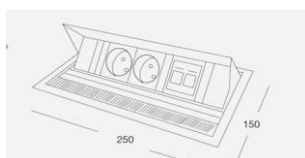
350x130 cm

Components :



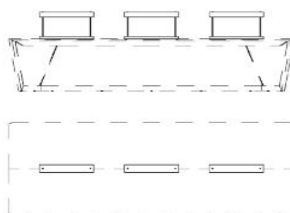
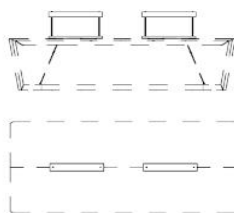
Cable Holder :

Steel tray epoxy painted.



Connection kit :

Including 2 electric power sources and 2 espaces for voice connectors and data.
25x15 cm.



Lighting :
Without Divider