

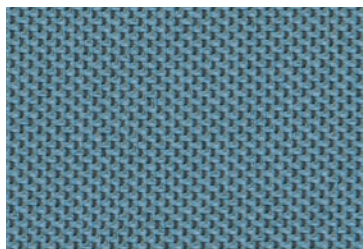
Group 1

Subject to changes and colour differences. Colours herein printed must be understood as approximate.

Links to the supplier's website are given for reference.

Collection Replay (Camira)

[Visit the website](#)



Composition: 100% Post-Consumer
Recycled Flame Retardant Polyester

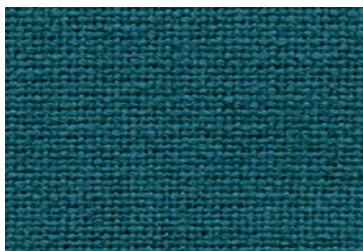
Guarantee: 10 Years

Flammability: EN 1021 - 1&2 (cigareBe & match)
BS 7176 Low Hazard
BS 5852 Igniaon Source 5
BS 7176 Medium Hazard
DIN 4102 B1
NF D 60-013
ÖNORM B 3825 & A 3800-1 (over CMHR 58kg/m 3 Foam) UNI
9175 Classe 1 IM
EN 13501-1 Un-adhered Class B, s1, d0
NF P 92-507 M1
BS 5867-2: Type B Curtains & Drapes with FR Treatment (Gorts)

Abrasion: ≥100,000 Martindale

Collection Advantage (Camira)

[Visit the website](#)



Composition: 60% Polypropylene
30% Wool
10% Viscose

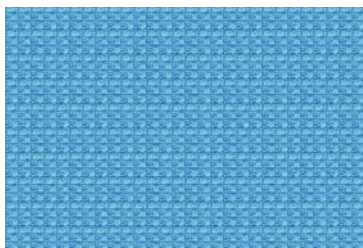
Guarantee: 10 Years

Flammability: EN 1021 - 1&2
BS 7176 Low Hazard

Abrasion: 60.000 Martindale

Collection Manhattan (Camira)

[Visit the website](#)



Composition: 100% Recycled Polyester

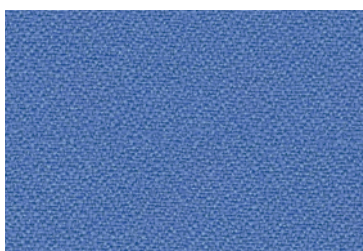
Guarantee: 10 Years

Flammability: EN 1021 - 1&2
BS 7176 Low Hazard
UNI 9175 Classe 1 IM

Abrasion: 50.000 Martindale

Collection Phoenix (Camira)

[Visit the website](#)



Composition: 100% Polyester

Guarantee: 10 Years

Flammability: EN 1021 - 1&2
BS 7176 Low Hazard
BS 7176 Low Hazard

Abrasion: 100.000 Martindale

Group 1

Subject to changes and colour differences. Colours herein printed must be understood as approximate.

Links to the supplier's website are given for reference.

Collection Valencia (Spradling)

[Visit the website](#)



Composition: Ext.: 100% Vinyl/Urethane

Guarantee: 10 Years

Flammability: EN 1021 Part 1 and 2
CAL TB 117-2013, Section E
UNE 23.727-90 1R/M.2
NF P 92-503/M2
DIN 4102 B2
UNI 9175 (1987) / UNI 9175/FA1 (1994) Classe 1.IM (UNO I EMME)
ÖNORM B 3825, Gruppe 1 - Schwerbrennbares Verhalten
ÖNORM A 3800 Teil 1, Qualmbildungsklasse Q1 - schwachqualmend

Abrasion: 300.000 Martindale

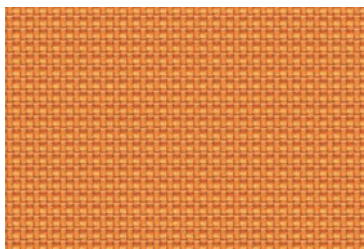
Group 2

Subject to changes and colour differences. Colours herein printed must be understood as approximate.

Links to the supplier's website are given for reference.

Collection Urban (Camira)

[Visit the website](#)



Composition: 100% Recycled Polyester

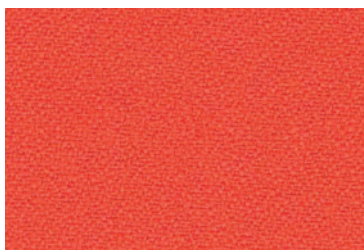
Guarantee: 10 Years

Flammability: EN 1021 - 1&2 (cigarette & match)
BS 7176 Low Hazard
BS 5852 Ignition Source 5
BS 7176 Medium Hazard
DIN 4102 B1
ÖNORM A 3800-1 (over CMHR 58kg/m3 Foam)
UNI 9175 Classe 1 IM

Abrasion: 100.000 Martindale

Collection Xtreme (Camira)

[Visit the website](#)



Composition: 100% Recycled Polyester

Guarantee: 10 Years

Flammability: EN 1021 - 1&2 (cigarette & match)
BS 7176 Low Hazard
BS 5852 Ignition Source 5
BS 7176 Medium Hazard
DIN 4102 B1
NF D 60-013
ÖNORM B 3825 & A 3800-1 (over 58 kg/m3 CMHR foam)
UNI 9175 Classe 1 IM
BS 476 Part 7 Class 1

Abrasion: 100.000 Martindale

Collection Silvertex (Spradling)

[Visit the website](#)



Composition: Topcoat: 100% Vinyl/Urethane

Guarantee: 5 Years

Flammability: EN 1021 Part 1 and 2
CAL TB 117-2013, Section E
UNE 23.727-90 1R/M.2
NF P 92-503/M2
DIN 4102 B2
UNI 9175 (1987) / UNI 9175/FA1 (1994) Classe 1.IM (UNO I EMME)
ÖNORM B 3825, Gruppe 1 - Schwerbrennbares Verhalten
ÖNORM A 3800 Teil 1, Qualmbildungsklasse Q1 - schwachqualmend

Abrasion: 300.000 Martindale

Group 3

Subject to changes and colour differences. Colours herein printed must be understood as approximate.

Links to the supplier's website are given for reference.

Collection X2 (Camira)

[Visit the website](#)



Composition: 100% Recycled Polyester

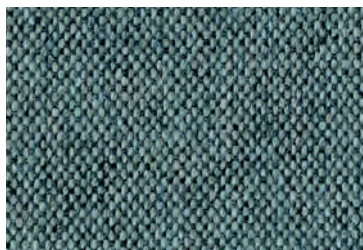
Guarantee: 10 Years

Flammability: EN 1021 - 1&2 (cigarette & match)
BS 7176 Low Hazard
BS 5852 Ignition Source 5
BS 7176 Medium Hazard
DIN 4102 B1
NF D 60-013
ÖNORM B 3825 & A 3800-1 (58 kg/m³ CMHR Foam)
UNI 9175 Classe 1 IM

Abrasion: 100.000 Martindale

Collection Main Line Flax (Camira)

[Visit the website](#)



Composition: 75% Pure New Wool
25% Flax

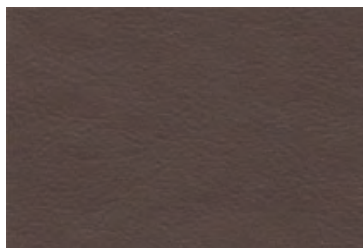
Guarantee: 10 Years

Flammability: EN 1021 - 1&2 (cigarette & match)
BS 7176 Low Hazard
BS 5852 Ignition Source 5
BS 7176 Medium Hazard
NF D 60-013
ÖNORM B 3825 & A 3800-1 (58kg/m³ CMHR Foam)
UNI 9175 Classe 1 IM
BS 5867-2: Type B Curtains & Drapes

Abrasion: 50.000 Martindale

Collection Nature (Alonso Mercader)

[Visit the website](#)



Composition: 100% Polyurethane

Guarantee: N/A

Flammability: EN 1021 - 1&2

Abrasion: 200.000 Martindale

*** N/A: Not available.

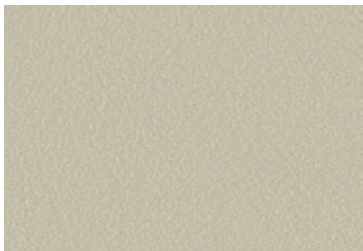
Group 4

Subject to changes and colour differences. Colours herein printed must be understand as approximate.

Links to the supplier's website are given for reference.

Collection Stamskin (Serge Ferrari)

[Visit the website](#)



Composition: 100% Polyamide

Flammability: M2/NFP92.507
EN 1021.1-1021.2
IMO MSC.307 (88)(201 FTP Code) Annex 1 part 8

Guarantee: 5 Years

Abrasion: 120.000 Martindale

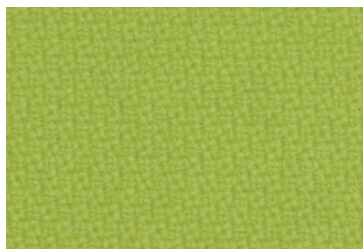
Group 5

Subject to changes and colour differences. Colours herein printed must be understand as approximate.

Links to the supplier's website are given for reference.

Collection Step (Gabriel)

[Visit the website](#)



Composition: 100% Trevira cs

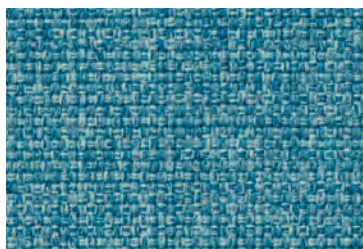
Guarantee: N/A

Flammability: IMO MSC 307(88) Annex 1 part 8
MED Certificate IMO
DIN 4102 - B1
NFP 92-503/504/505 M1
EN 1021 1&2 Cigarette and Match
BS 5852 Crib 5
ÖNORM A3800-B1-B3825-Q1 UK
FAR/JAR 25.853 (a) (i) (ii)
BS 7176 Medium hazard
AM 18 - NF D 60-013-(only for fabric)
CA TB 117-2013
Class Uno UNI 9175 Class 1 I EMME
DIN EN 13501-1 B-s1,d0

Abrasion: 100.000 Martindale

Collection Medley (Gabriel)

[Visit the website](#)



Composition: 100% Polyester

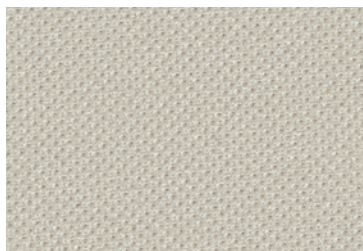
Guarantee: 10 Years

Flammability: BS EN 1021 1&2 Cigarette and Match
BS 476 Part 7 class II
Class Uno UNI 9174 - UNI 8457
ÖNORM A3800-B2-B3825-Q1 UK
CA TB 117-2013
ASTM E 84 Class I

Abrasion: 75.000 Martindale

Collection Atlantic (Gabriel)

[Visit the website](#)



Composition: 100% Polyester

Guarantee: N/A

Flammability: CA TB 117-2013
ASTM E 84 Class I
ÖNORM A3800-B1-B3825-Q1 UK
BS EN 1021-1&2 Cigarette and Match

Abrasion: 110.000 Martindale

Collection Blazer (Camira)

[Visit the website](#)



Composition: 100% Pure New Wool

Guarantee: 10 Years

Flammability: EN 1021 - 1&2 (cigarette & match)
BS 7176 Low Hazard
NF D 60-013
ÖNORM B 3825 & A 3800-1 (58kg/m3 CMHR Foam)
UNI 9175 Classe 1 IM
BS 476 Part 7 Class 1 (Adhered)
EN 13501-1 Adhered Class D, s1, d0
BS 5867-2: Type B Curtains & Drapes

Abrasion: 50.000 Martindale

*** N/A: Not available.

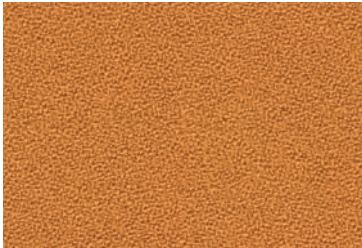
Group 5

Subject to changes and colour differences. Colours herein printed must be understand as approximate.

Links to the supplier's website are given for reference.

Collection Aquarius (Camira)

[Visit the website](#)



Composition: 100% Pure New Wool

Guarantee: 10 Years

Flammability: EN 1021 - 1&2 (cigarette & match)
BS 7176 Low Hazard
UNI 9175 Classe 1 IM

Abrasion: 50.000 Martindale

Group 6

Subject to changes and colour differences. Colours herein printed must be understand as approximate.

Links to the supplier's website are given for reference.

Collection Step Melange (Gabriel)

[Visit the website](#)



Composition: 100% Trevira cs

Guarantee: N/A

Flammability: IMO MSC 307(88) Annex 1 part 8
MED Certificate IMO
DIN 4102 - B1
NFP 92-503/504/505 M1
EN 1021 1&2 Cigarette and Match
BS 5852 Crib 5
ÖNORM A3800-B1-B3825-Q1 UK
FAR/JAR 25.853 (a) (i) (ii)
BS 7176 Medium hazard
AM 18 - NF D 60-013-(only for fabric)
CA TB 117-2013
Class Uno UNI 9175 Class 1 I EMME
DIN EN 13501-1 B-s1,d0

Abrasion: 100.000 Martindale

*** N/A: Not available.

Group 7

Subject to changes and colour differences. Colours herein printed must be understand as approximate.

Links to the supplier's website are given for reference.

Collection Fame (Gabriel)

[Visit the website](#)



Composition: 95% New Zealand Wool
5% Polyamide

Guarantee: N/A

Flammability: EN 1021-1&2 Cigarette and Match
BS 5852 Crib 5
CA TB 117-2013
Class Uno UNI 9175 Class 1 I EMME
AM 18 - NF D 60-013-(only for fabric)
BS 5852 Part 1 0,1 Cigarette & match
ÖNORM A3800-B1-B3825-Q1 UK
IMO MSC 307(88) Annex 1 part 8
MED Certificate IMO
BS 476 Part 7 class I

Abrasion: 200.000 Martindale

*** N/A: Not available.

Group 8

Subject to changes and colour differences. Colours herein printed must be understood as approximate.

Links to the supplier's website are given for reference.

Collection Crisp (Gabriel)

[Visit the website](#)



Composition: 93% New Zealand Wool
7% Polyamide

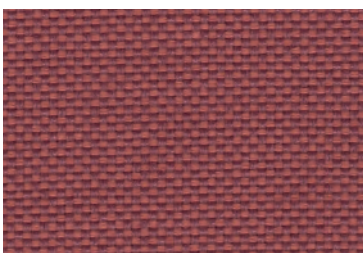
Guarantee: N/A

Flammability: BS 5852 Part 1 0,1 Cigarette & match
BS 476 Part 7 class II
EN 1021 1&2 Cigarette and Match
Class Uno UNI 9175 Class 1 I EMME
CA TB 117-2013
IMO MSC 307(88) Annex 1 part 8
MED Certificate IMO
ÖNORM A3800-B2-B3825-Q1 UK

Abrasion: 200.000 Martindale

Collection Field 2 (Kvadrat)

[Visit the website](#)



Composition: 100% Trevira CS

Guarantee: 10 Years

Flammability: NF D 60 013
DIN 4102 B1
BS 5852 Crib 5
SN 198 898 5.2
UNI 9175 1IM
US Cal. Bull. 117-2013
UNI 9177 Classe 1
FAR 25.853
NF P 92 507 M1
IMO FTP Code 2010 Part 8

Abrasion: 80.000 Martindale

Collection Canvas 2 (Kvadrat)

[Visit the website](#)



Composition: 90% Wool
10% Nylon

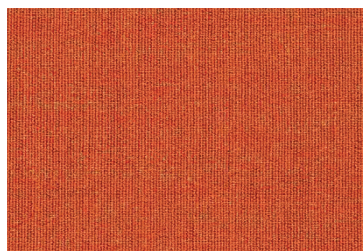
Guarantee: 10 Years

Flammability: AS/NZS 1530.3
NFPA 260
BS 5852 ignition source 3
BS 5852 crib 5 with treatment UNI 9175 1IM • US Cal. Bull. 117-2013
IMO FTP Code 2010 Part 8
NF D 60 013
BS 5852 part 1
SN 198 898 5.3 with treatment

Abrasion: 100.000 Martindale

Collection Remix 3 (Kvadrat)

[Visit the website](#)



Composition: 90% Wool
10% Nylon

Guarantee: N/A

Flammability: BS 5852 ignition source 3
IMO FTP Code 2010 Part 7 with treatment
US Cal. Bull. 117-2013
BS 5852 part 1
AS/NZS 1530.3
NFPA 260
NF D 60 013
BS 5852 crib 5 with treatment
SN 198 898 5.3 with treatment
UNI 9175 1IM
IMO FTP Code 2010 Part 8

Abrasion: 100.000 Martindale

*** N/A: Not available.

Group 8

Subject to changes and colour differences. Colours herein printed must be understand as approximate.

Links to the supplier's website are given for reference.

Collection Revive 1 (Kvadrat)

[Visit the website](#)



Composition: 100% Recycled Polyester

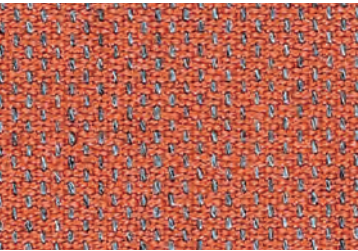
Flammability: UNI 9177 Classe 1
BS 5852 crib 5 with treatment
DIN 4102 B1
SN 198 898 5.3 with treatment
BS 5852 ignition source 3
US Cal. Bull. 117-2013
NF D 60 013 with treatment
UNI 9175 1IM • N/A (131)
IMO FTP Code 2010 Part 8

Guarantee: 10 Years

Abrasion: 60.000 Martindale

Collection Clara 2 (Kvadrat)

[Visit the website](#)



Composition: 92% Wool
8% Nylon

Flammability: NF D 60 013
US Cal. Bull. 117-2013
BS 5852 crib 5 with treatment
UNI 9175 1IM
AS/NZS 3837
IMO FTP Code 2010 Part 8
BS 5852 part 1
NFPA 260

Guarantee: 10 Years

Abrasion: 80.000 Martindale

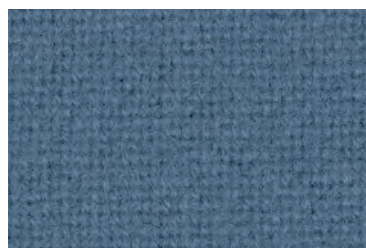
Group 9

Subject to changes and colour differences. Colours herein printed must be understood as approximate.

Links to the supplier's website are given for reference.

Collection Tonus 4 (Kvadrat)

[Visit the website](#)



Composition: 90% Wool
10% Nylon

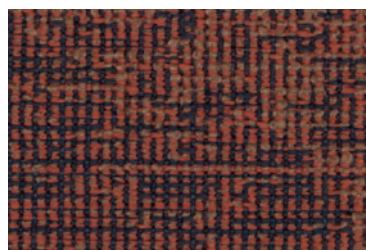
Guarantee: 10 Years

Flammability: US Cal. Bull. 117-2013
SN 198 898 5.3 with treatment
AS/NZS 1530.3
BS 5852 crib 5 with treatment
BS 5852 part 1
N/A (131)
IMO FTP Code 2010 Part 8
UNI 9175 1IM
NF D 60 013
NFPA 260

Abrasion: 100.000 Martindale

Collection Memory 2 (Kvadrat)

[Visit the website](#)



Composition: 100% Trevira cs

Guarantee: 10 Years

Flammability: IMO FTP Code 2010 Part 8
JIS L 1091 A-1 D
NFPA 260
NF D 60 013
UNI 9175 1IM 2013
DIN 4102 B1
UNI 9177 Classe 1
BS 5852 crib 5 with treatment
NF P 92 507 M1
SN 198 898 5.2
US Cal. Bull. 117-2013

Abrasion: 35.000 Martindale

Collection Europost 2 (Gabriel)

[Visit the website](#)



Composition: 100% New Zealand Wool

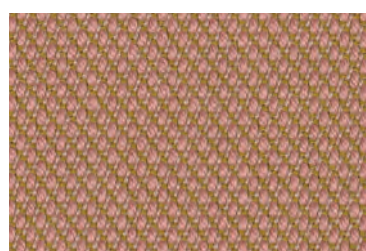
Guarantee: N/A

Flammability: BS 5852 Part 1 0,1 Cigarette & match
ÖNORM A3800-B2-B3825-Q1 UK
Class Uno UNI 9175 Class 1 I EMME
EN 1021 1&2 Cigarette and Match
IMO MSC 307(88) Annex 1 part 8
MED Certificate IMO
CA TB 117-2013
ASTM E 84 Class II
NFPA 286 Room corner fire test
DIN 4102 - B2
BS 476 Part 7 class I

Abrasion: 50.000 Martindale

Collection Steelcut Trio (Kvadrat)

[Visit the website](#)



Composition: 90% Wool
10% Nylon

Guarantee: 10 Years

Flammability: UNI 9175 1IM
BS 5852 part 1
BS 5852 ignition source 3
NF D 60 013
SN 198 898 5.3 with treatment
US Cal. Bull. 117-2013
BS 5852 crib 5 with treatment
IMO FTP Code 2010 Part 8
NFPA 260 • AS/NZS 1530.3

Abrasion: 100.000 Martindale

*** N/A: Not available.

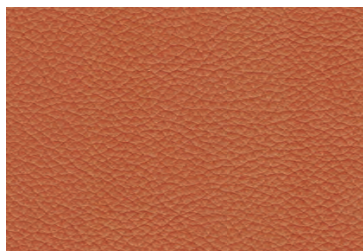
Group 10

Subject to changes and colour differences. Colours herein printed must be understood as approximate.

Links to the supplier's website are given for reference.

Collection Serie 100 (Antic Cuir)

[Visit the website](#)



Composition: Embossed Leather

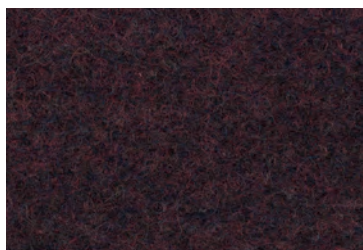
Guarantee: N/A

Flammability: UNE EN 1021-1&2
OMI MSC.61(67), Code FTP, Ap. 1, Part 8, Resolution A.652 (16)

Abrasion: N/A

Collection Divina MD (Kvadrat)

[Visit the website](#)



Composition: 100% Wool

Guarantee: 10 Years

Flammability: NFPA 260
US Cal. Bull. 117-2013
BS 5852 Crib 5
SN 198 898 5.3 with treatment
IMO FTP Code 2010 Part 8
UNI 9175 1IM
BS 5867 part 2 type B
BS 5852 ignition source 3
NF D 60 013
BS 5852 part 1
AS/NZS 1530.3

Abrasion: 45.000 Martindale

Collection Comfort+ (Gabriel)

[Visit the website](#)



Composition: 88% Polyester
12% Polyurethane

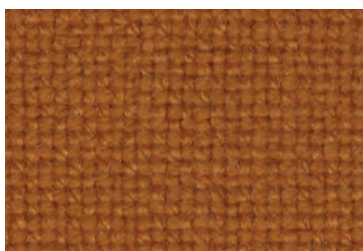
Guarantee: 10 Years

Flammability: EN 1021 1&2 Cigarette and Match
ÖNORM A3800-B2-B3825-Q1 UK
NF P 92-503 M3
CA TB 117-2013

Abrasion: 150.000 Martindale

Collection Hallingdal 65 (Kvadrat)

[Visit the website](#)



Composition: 70% Wool
30% Viscose

Guarantee: 10 Years

Flammability: NFPA 260
IMO FTP Code 2010 Part 8
UNI 9175 1IM
NF D 60 013
BS 5852 part 1
BS 5852 Crib 5
AS/NZS 1530.3
BS 5852 ignition source 3
US Cal. Bull. 117-2013

Abrasion: 100.000 Martindale

*** N/A: Not available.