

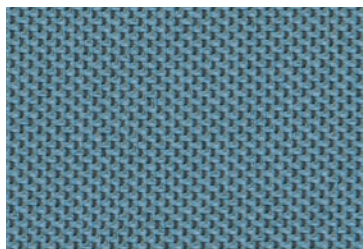
# Group 1

Subject to changes and colour differences. Colours herein printed must be understood as approximate.

Links to the supplier's website are given for reference.

## Collection Replay (Camira)

[Visit the website](#)



**Composition:** 100% Post-Consumer  
Recycled Flame Retardant Polyester

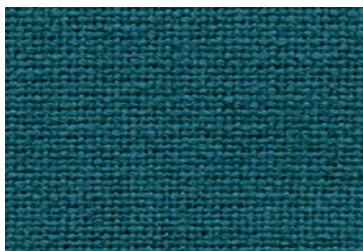
**Guarantee:** 10 Years

**Flammability:** EN 1021 - 1&2 (cigareBe & match)  
BS 7176 Low Hazard  
BS 5852 Igniaon Source 5  
BS 7176 Medium Hazard  
DIN 4102 B1  
NF D 60-013  
ÖNORM B 3825 & A 3800-1 (over CMHR 58kg/m 3 Foam) UNI  
9175 Classe 1 IM  
EN 13501-1 Un-adhered Class B, s1, d0  
NF P 92-507 M1  
BS 5867-2: Type B Curtains & Drapes with FR Treatment (Gorts)

**Abrasion:** ≥100,000 Martindale

## Collection Advantage (Camira)

[Visit the website](#)



**Composition:** 60% Polypropylene  
30% Wool  
10% Viscose

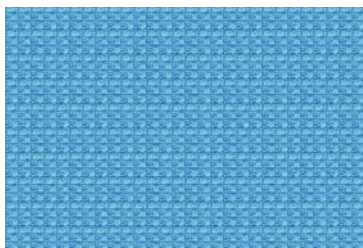
**Guarantee:** 10 Years

**Flammability:** EN 1021 - 1&2  
BS 7176 Low Hazard

**Abrasion:** 60.000 Martindale

## Collection Manhattan (Camira)

[Visit the website](#)



**Composition:** 100% Recycled Polyester

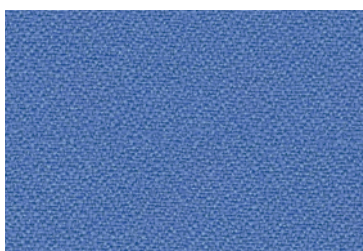
**Guarantee:** 10 Years

**Flammability:** EN 1021 - 1&2  
BS 7176 Low Hazard  
UNI 9175 Classe 1 IM

**Abrasion:** 50.000 Martindale

## Collection Phoenix (Camira)

[Visit the website](#)



**Composition:** 100% Polyester

**Guarantee:** 10 Years

**Flammability:** EN 1021 - 1&2  
BS 7176 Low Hazard  
BS 7176 Low Hazard

**Abrasion:** 100.000 Martindale

# Group 1

Subject to changes and colour differences. Colours herein printed must be understood as approximate.

Links to the supplier's website are given for reference.

## Collection Valencia (Spradling)

[Visit the website](#)



**Composition:** Ext.: 100% Vinyl/Urethane

**Guarantee:** 10 Years

**Flammability:** EN 1021 Part 1 and 2  
CAL TB 117-2013, Section E  
UNE 23.727-90 1R/M.2  
NF P 92-503/M2  
DIN 4102 B2  
UNI 9175 (1987) / UNI 9175/FA1 (1994) Classe 1.IM (UNO I EMME)  
ÖNORM B 3825, Gruppe 1 - Schwerbrennbares Verhalten  
ÖNORM A 3800 Teil 1, Qualmbildungsklasse Q1 - schwachqualmend

**Abrasion:** 300.000 Martindale

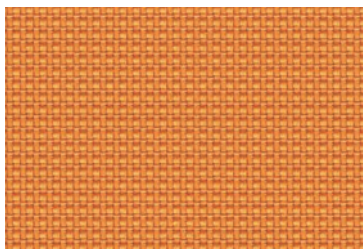
# Group 2

Subject to changes and colour differences. Colours herein printed must be understood as approximate.

Links to the supplier's website are given for reference.

## Collection Urban (Camira)

[Visit the website](#)



**Composition:** 100% Recycled Polyester

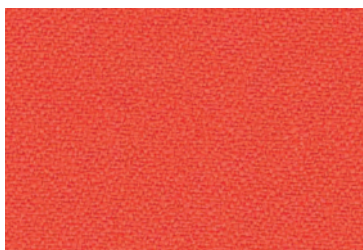
**Guarantee:** 10 Years

**Flammability:** EN 1021 - 1&2 (cigarette & match)  
BS 7176 Low Hazard  
BS 5852 Ignition Source 5  
BS 7176 Medium Hazard  
DIN 4102 B1  
ÖNORM A 3800-1 (over CMHR 58kg/m3 Foam)  
UNI 9175 Classe 1 IM

**Abrasion:** 100.000 Martindale

## Collection Xtreme (Camira)

[Visit the website](#)



**Composition:** 100% Recycled Polyester

**Guarantee:** 10 Years

**Flammability:** EN 1021 - 1&2 (cigarette & match)  
BS 7176 Low Hazard  
BS 5852 Ignition Source 5  
BS 7176 Medium Hazard  
DIN 4102 B1  
NF D 60-013  
ÖNORM B 3825 & A 3800-1 (over 58 kg/m3 CMHR foam)  
UNI 9175 Classe 1 IM  
BS 476 Part 7 Class 1

**Abrasion:** 100.000 Martindale

## Collection Silvertex (Spradling)

[Visit the website](#)



**Composition:** Topcoat: 100% Vinyl/Urethane

**Guarantee:** 5 Years

**Flammability:** EN 1021 Part 1 and 2  
CAL TB 117-2013, Section E  
UNE 23.727-90 1R/M.2  
NF P 92-503/M2  
DIN 4102 B2  
UNI 9175 (1987) / UNI 9175/FA1 (1994) Classe 1.IM (UNO I EMME)  
ÖNORM B 3825, Gruppe 1 - Schwerbrennbares Verhalten  
ÖNORM A 3800 Teil 1, Qualmbildungsklasse Q1 - schwachqualmend

**Abrasion:** 300.000 Martindale

# Group 3

Subject to changes and colour differences. Colours herein printed must be understood as approximate.

Links to the supplier's website are given for reference.

## Collection X2 (Camira)

[Visit the website](#)



**Composition:** 100% Recycled Polyester

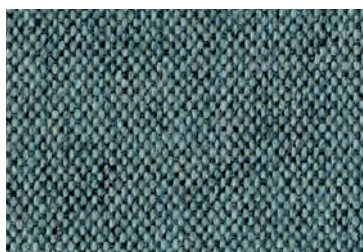
**Guarantee:** 10 Years

**Flammability:** EN 1021 - 1&2 (cigarette & match)  
BS 7176 Low Hazard  
BS 5852 Ignition Source 5  
BS 7176 Medium Hazard  
DIN 4102 B1  
NF D 60-013  
ÖNORM B 3825 & A 3800-1 (58 kg/m<sup>3</sup> CMHR Foam)  
UNI 9175 Classe 1 IM

**Abrasion:** 100.000 Martindale

## Collection Main Line Flax (Camira)

[Visit the website](#)



**Composition:** 75% Pure New Wool  
25% Flax

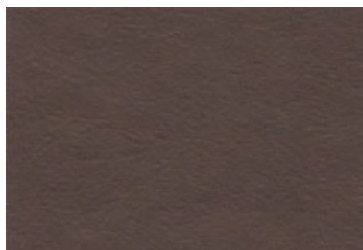
**Guarantee:** 10 Years

**Flammability:** EN 1021 - 1&2 (cigarette & match)  
BS 7176 Low Hazard  
BS 5852 Ignition Source 5  
BS 7176 Medium Hazard  
NF D 60-013  
ÖNORM B 3825 & A 3800-1 (58kg/m<sup>3</sup> CMHR Foam)  
UNI 9175 Classe 1 IM  
BS 5867-2: Type B Curtains & Drapes

**Abrasion:** 50.000 Martindale

## Collection Nature (Alonso Mercader)

[Visit the website](#)



**Composition:** 100% Polyurethane

**Guarantee:** N/A

**Flammability:** EN 1021 - 1&2

**Abrasion:** 200.000 Martindale

\*\*\* N/A: Not available.

# Group 4

Subject to changes and colour differences. Colours herein printed must be understand as approximate.

Links to the supplier's website are given for reference.

## Collection Stamskin (Serge Ferrari)

[Visit the website](#)



**Composition:** 100% Polyamide

**Flammability:** M2/NFP92.507  
EN 1021.1-1021.2  
IMO MSC.307 (88)(201 FTP Code) Annex 1 part 8

**Guarantee:** 5 Years

**Abrasion:** 120.000 Martindale

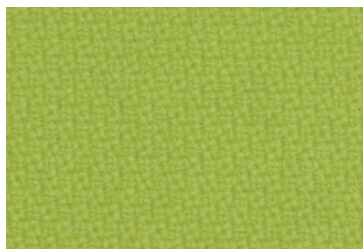
# Group 5

Subject to changes and colour differences. Colours herein printed must be understand as approximate.

Links to the supplier's website are given for reference.

## Collection Step (Gabriel)

[Visit the website](#)



**Composition:** 100% Trevira cs

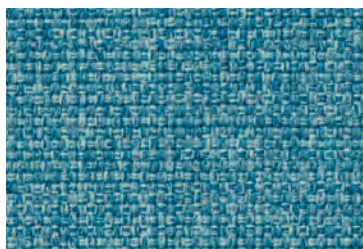
**Guarantee:** N/A

**Flammability:** IMO MSC 307(88) Annex 1 part 8  
MED Certificate IMO  
DIN 4102 - B1  
NFP 92-503/504/505 M1  
EN 1021 1&2 Cigarette and Match  
BS 5852 Crib 5  
ÖNORM A3800-B1-B3825-Q1 UK  
FAR/JAR 25.853 (a) (i) (ii)  
BS 7176 Medium hazard  
AM 18 - NF D 60-013-(only for fabric)  
CA TB 117-2013  
Class Uno UNI 9175 Class 1 I EMME  
DIN EN 13501-1 B-s1,d0

**Abrasion:** 100.000 Martindale

## Collection Medley (Gabriel)

[Visit the website](#)



**Composition:** 100% Polyester

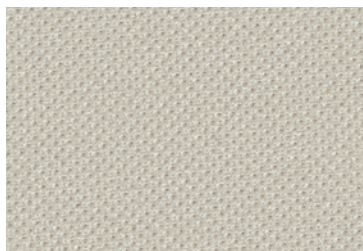
**Guarantee:** 10 Years

**Flammability:** BS EN 1021 1&2 Cigarette and Match  
BS 476 Part 7 class II  
Class Uno UNI 9174 - UNI 8457  
ÖNORM A3800-B2-B3825-Q1 UK  
CA TB 117-2013  
ASTM E 84 Class I

**Abrasion:** 75.000 Martindale

## Collection Atlantic (Gabriel)

[Visit the website](#)



**Composition:** 100% Polyester

**Guarantee:** N/A

**Flammability:** CA TB 117-2013  
ASTM E 84 Class I  
ÖNORM A3800-B1-B3825-Q1 UK  
BS EN 1021-1&2 Cigarette and Match

**Abrasion:** 110.000 Martindale

## Collection Blazer (Camira)

[Visit the website](#)



**Composition:** 100% Pure New Wool

**Guarantee:** 10 Years

**Flammability:** EN 1021 - 1&2 (cigarette & match)  
BS 7176 Low Hazard  
NF D 60-013  
ÖNORM B 3825 & A 3800-1 (58kg/m3 CMHR Foam)  
UNI 9175 Classe 1 IM  
BS 476 Part 7 Class 1 (Adhered)  
EN 13501-1 Adhered Class D, s1, d0  
BS 5867-2: Type B Curtains & Drapes

**Abrasion:** 50.000 Martindale

\*\*\* N/A: Not available.



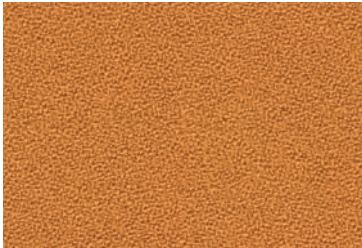
# Group 5

Subject to changes and colour differences. Colours herein printed must be understand as approximate.

Links to the supplier's website are given for reference.

## Collection Aquarius (Camira)

[Visit the website](#)



**Composition:** 100% Pure New Wool

**Guarantee:** 10 Years

**Flammability:** EN 1021 - 1&2 (cigarette & match)  
BS 7176 Low Hazard  
UNI 9175 Classe 1 IM

**Abrasion:** 50.000 Martindale

# Group 6

Subject to changes and colour differences. Colours herein printed must be understand as approximate.

Links to the supplier's website are given for reference.

## Collection Step Melange (Gabriel)

[Visit the website](#)



**Composition:** 100% Trevira cs

**Guarantee:** N/A

**Flammability:** IMO MSC 307(88) Annex 1 part 8  
MED Certificate IMO  
DIN 4102 - B1  
NFP 92-503/504/505 M1  
EN 1021 1&2 Cigarette and Match  
BS 5852 Crib 5  
ÖNORM A3800-B1-B3825-Q1 UK  
FAR/JAR 25.853 (a) (i) (ii)  
BS 7176 Medium hazard  
AM 18 - NF D 60-013-(only for fabric)  
CA TB 117-2013  
Class Uno UNI 9175 Class 1 I EMME  
DIN EN 13501-1 B-s1,d0

**Abrasion:** 100.000 Martindale

\*\*\* N/A: Not available.



# Group 7

Subject to changes and colour differences. Colours herein printed must be understand as approximate.

Links to the supplier's website are given for reference.

## Collection Fame (Gabriel)

[Visit the website](#)



**Composition:** 95% New Zealand Wool  
5% Polyamide

**Guarantee:** N/A

**Flammability:** EN 1021-1&2 Cigarette and Match  
BS 5852 Crib 5  
CA TB 117-2013  
Class Uno UNI 9175 Class 1 I EMME  
AM 18 - NF D 60-013-(only for fabric)  
BS 5852 Part 1 0,1 Cigarette & match  
ÖNORM A3800-B1-B3825-Q1 UK  
IMO MSC 307(88) Annex 1 part 8  
MED Certificate IMO  
BS 476 Part 7 class I

**Abrasion:** 200.000 Martindale

\*\*\* N/A: Not available.

# Group 8

Subject to changes and colour differences. Colours herein printed must be understood as approximate.

Links to the supplier's website are given for reference.

## Collection Crisp (Gabriel)

[Visit the website](#)



**Composition:** 93% New Zealand Wool  
7% Polyamide

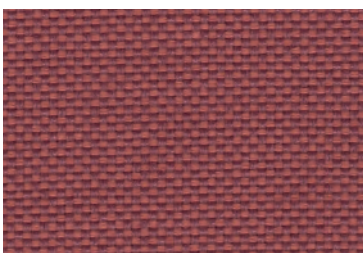
**Guarantee:** N/A

**Flammability:** BS 5852 Part 1 0,1 Cigarette & match  
BS 476 Part 7 class II  
EN 1021 1&2 Cigarette and Match  
Class Uno UNI 9175 Class 1 I EMME  
CA TB 117-2013  
IMO MSC 307(88) Annex 1 part 8  
MED Certificate IMO  
ÖNORM A3800-B2-B3825-Q1 UK

**Abrasion:** 200.000 Martindale

## Collection Field 2 (Kvadrat)

[Visit the website](#)



**Composition:** 100% Trevira CS

**Guarantee:** 10 Years

**Flammability:** NF D 60 013  
DIN 4102 B1  
BS 5852 Crib 5  
SN 198 898 5.2  
UNI 9175 1IM  
US Cal. Bull. 117-2013  
UNI 9177 Classe 1  
FAR 25.853  
NF P 92 507 M1  
IMO FTP Code 2010 Part 8

**Abrasion:** 80.000 Martindale

## Collection Canvas 2 (Kvadrat)

[Visit the website](#)



**Composition:** 90% Wool  
10% Nylon

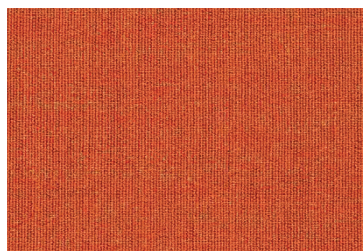
**Guarantee:** 10 Years

**Flammability:** AS/NZS 1530.3  
NFPA 260  
BS 5852 ignition source 3  
BS 5852 crib 5 with treatment UNI 9175 1IM • US Cal. Bull. 117-2013  
IMO FTP Code 2010 Part 8  
NF D 60 013  
BS 5852 part 1  
SN 198 898 5.3 with treatment

**Abrasion:** 100.000 Martindale

## Collection Remix 3 (Kvadrat)

[Visit the website](#)



**Composition:** 90% Wool  
10% Nylon

**Guarantee:** N/A

**Flammability:** BS 5852 ignition source 3  
IMO FTP Code 2010 Part 7 with treatment  
US Cal. Bull. 117-2013  
BS 5852 part 1  
AS/NZS 1530.3  
NFPA 260  
NF D 60 013  
BS 5852 crib 5 with treatment  
SN 198 898 5.3 with treatment  
UNI 9175 1IM  
IMO FTP Code 2010 Part 8

**Abrasion:** 100.000 Martindale

\*\*\* N/A: Not available.

# Group 8

Subject to changes and colour differences. Colours herein printed must be understand as approximate.

Links to the supplier's website are given for reference.

## Collection Revive 1 (Kvadrat)

[Visit the website](#)



**Composition:** 100% Recycled Polyester

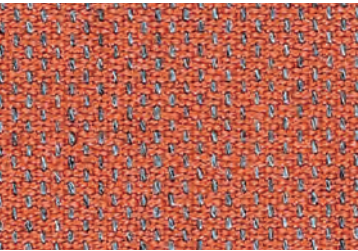
**Flammability:** UNI 9177 Classe 1  
BS 5852 crib 5 with treatment  
DIN 4102 B1  
SN 198 898 5.3 with treatment  
BS 5852 ignition source 3  
US Cal. Bull. 117-2013  
NF D 60 013 with treatment  
UNI 9175 1IM • N/A (131)  
IMO FTP Code 2010 Part 8

**Guarantee:** 10 Years

**Abrasion:** 60.000 Martindale

## Collection Clara 2 (Kvadrat)

[Visit the website](#)



**Composition:** 92% Wool  
8% Nylon

**Flammability:** NF D 60 013  
US Cal. Bull. 117-2013  
BS 5852 crib 5 with treatment  
UNI 9175 1IM  
AS/NZS 3837  
IMO FTP Code 2010 Part 8  
BS 5852 part 1  
NFPA 260

**Guarantee:** 10 Years

**Abrasion:** 80.000 Martindale

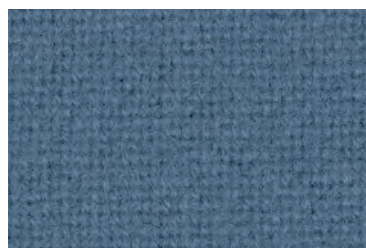
# Group 9

Subject to changes and colour differences. Colours herein printed must be understood as approximate.

Links to the supplier's website are given for reference.

## Collection Tonus 4 (Kvadrat)

[Visit the website](#)



**Composition:** 90% Wool  
10% Nylon

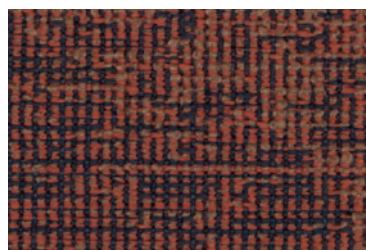
**Guarantee:** 10 Years

**Flammability:** US Cal. Bull. 117-2013  
SN 198 898 5.3 with treatment  
AS/NZS 1530.3  
BS 5852 crib 5 with treatment  
BS 5852 part 1  
N/A (131)  
IMO FTP Code 2010 Part 8  
UNI 9175 1IM  
NF D 60 013  
NFPA 260

**Abrasion:** 100.000 Martindale

## Collection Memory 2 (Kvadrat)

[Visit the website](#)



**Composition:** 100% Trevira cs

**Guarantee:** 10 Years

**Flammability:** IMO FTP Code 2010 Part 8  
JIS L 1091 A-1 D  
NFPA 260  
NF D 60 013  
UNI 9175 1IM 2013  
DIN 4102 B1  
UNI 9177 Classe 1  
BS 5852 crib 5 with treatment  
NF P 92 507 M1  
SN 198 898 5.2  
US Cal. Bull. 117-2013

**Abrasion:** 35.000 Martindale

## Collection Europost 2 (Gabriel)

[Visit the website](#)



**Composition:** 100% New Zealand Wool

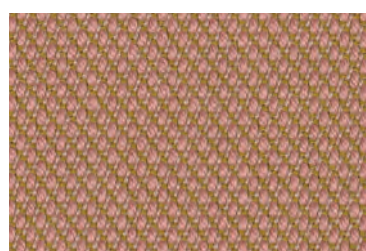
**Guarantee:** N/A

**Flammability:** BS 5852 Part 1 0,1 Cigarette & match  
ÖNORM A3800-B2-B3825-Q1 UK  
Class Uno UNI 9175 Class 1 I EMME  
EN 1021 1&2 Cigarette and Match  
IMO MSC 307(88) Annex 1 part 8  
MED Certificate IMO  
CA TB 117-2013  
ASTM E 84 Class II  
NFPA 286 Room corner fire test  
DIN 4102 - B2  
BS 476 Part 7 class I

**Abrasion:** 50.000 Martindale

## Collection Steelcut Trio (Kvadrat)

[Visit the website](#)



**Composition:** 90% Wool  
10% Nylon

**Guarantee:** 10 Years

**Flammability:** UNI 9175 1IM  
BS 5852 part 1  
BS 5852 ignition source 3  
NF D 60 013  
SN 198 898 5.3 with treatment  
US Cal. Bull. 117-2013  
BS 5852 crib 5 with treatment  
IMO FTP Code 2010 Part 8  
NFPA 260 • AS/NZS 1530.3

**Abrasion:** 100.000 Martindale

\*\*\* N/A: Not available.

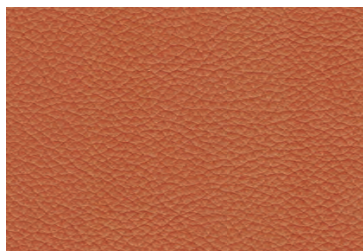
# Group 10

Subject to changes and colour differences. Colours herein printed must be understood as approximate.

Links to the supplier's website are given for reference.

## Collection Serie 100 (Antic Cuir)

[Visit the website](#)



**Composition:** Embossed Leather

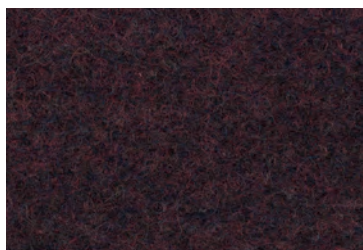
**Guarantee:** N/A

**Flammability:** UNE EN 1021-1&2  
OMI MSC.61(67), Code FTP, Ap. 1, Part 8, Resolution A.652 (16)

**Abrasion:** N/A

## Collection Divina MD (Kvadrat)

[Visit the website](#)



**Composition:** 100% Wool

**Guarantee:** 10 Years

**Flammability:** NFPA 260  
US Cal. Bull. 117-2013  
BS 5852 Crib 5  
SN 198 898 5.3 with treatment  
IMO FTP Code 2010 Part 8  
UNI 9175 1IM  
BS 5867 part 2 type B  
BS 5852 ignition source 3  
NF D 60 013  
BS 5852 part 1  
AS/NZS 1530.3

**Abrasion:** 45.000 Martindale

## Collection Comfort+ (Gabriel)

[Visit the website](#)



**Composition:** 88% Polyester  
12% Polyurethane

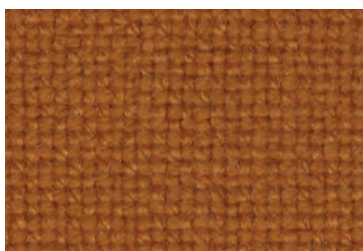
**Guarantee:** 10 Years

**Flammability:** EN 1021 1&2 Cigarette and Match  
ÖNORM A3800-B2-B3825-Q1 UK  
NF P 92-503 M3  
CA TB 117-2013

**Abrasion:** 150.000 Martindale

## Collection Hallingdal 65 (Kvadrat)

[Visit the website](#)



**Composition:** 70% Wool  
30% Viscose

**Guarantee:** 10 Years

**Flammability:** NFPA 260  
IMO FTP Code 2010 Part 8  
UNI 9175 1IM  
NF D 60 013  
BS 5852 part 1  
BS 5852 Crib 5  
AS/NZS 1530.3  
BS 5852 ignition source 3  
US Cal. Bull. 117-2013

**Abrasion:** 100.000 Martindale

\*\*\* N/A: Not available.